



**Tournament Director:** Matt Tolnay, (972)978-0487

**Location:** Lake Lewisville

**Weigh-in Site:** Little Elm Park

- 135 Lighthouse Beach Dr, Little Elm TX 75068
- This location as a \$10 FEE to use the ramp.

**Date:** October 24, 2020

**Covid Guidelines: Spectators will be allowed at the event. Everyone must wear face coverings at the weigh in location and Academy Check in. Please maintain the state recommended social distancing guidelines.**

**Entry Due Date:** ENTRIES MUST BE RECEIVED BY SUNDAY, SIX (6) DAYS PRIOR TO EVENT AT 11:59PM. ANY ENTRY RECEIVED AFTER SUNDAY WILL BE CHARGED A LATE FEE OF \$20/TEAM. NO ENTRIES WILL BE TAKEN AFTER WEDNESDAY THREE (3) DAYS PRIOR TO THE EVENT AT 11:59PM.

**Registration:**

- **Friday October 23, 2020** will be at Academy in Lewisville
  - 2428 S Stemmons Fwy, Lewisville, TX 75067
  - 5:00pm-7:00pm
- **Saturday October 24, 2020** will be at the Weight in Location
  - 5am to start fish time unless a team has contacted the director.
- Students MUST register to receive flight number at this time (Tyvek Wristband), however, an advisor, captain or parent may sign in for team(s) if student is not available to do so. Any changes MUST be made at this time. Boat numbers are assigned randomly by the computer program.

**Payments: All Check or Cash entries MUST BE PAID IN FULL by the start of the Event. If not paid in full the team will be disqualified from the event.**

**Take Off: EVENT WILL BE TRAILERING.** Boats may not enter tournament waters until 4 am. After 4am teams may leave the ramp of their choice on tournament day with running lights on, life jackets zipped or buckled, kill switch properly attached and students seated properly in the boat. The Tournament Director has the right to remove any boat from competition due to a safety violation. KEEP THE WRISTBANDS WITH YOUR BOAT NUMBER ARE PROOF THAT YOU ARE COMPETING IN AN OFFICIAL TOURNAMENT. PER TEXAS PARKS AND WILDLIFE REGULATIONS FOR AN OFF-SITE WEIGH-IN, ALL TEAMS COMPETING IN THIS REGIONAL MUST HAVE THEIR WRISTBAND IN THEIR POSITION ON TOURNAMENT DAY IN ORDER TO LEGALLY TRANSPORT FISH FROM THE LAKE TO THE WEIGH-IN SITE.

**First cast will be at 7:15am. All lines must stop fishing at 3 pm. Teams must be in the weigh-in line by 4:30 pm. Any team not checked in and in line with their fish and/or in line waiting for a sponsor provided clear weigh in bag by 4:30 pm will not be allowed to weigh-in their catch.**



**Off Limits:** Any area on the lake with signs or buoys that state “No Fishing”, “No Trespassing”, “Keep Out”, “Off Limits”, etc or any other similar sign is deemed Off Limits.

**Creel Limit:** For all bass species, **minimum length limit = 14 inches**. Daily bag for all four species of black bass = 5 in any combination

**Tournament Rules:** Check the Texas High School Bass Association’s website for a list of the current tournament rules.

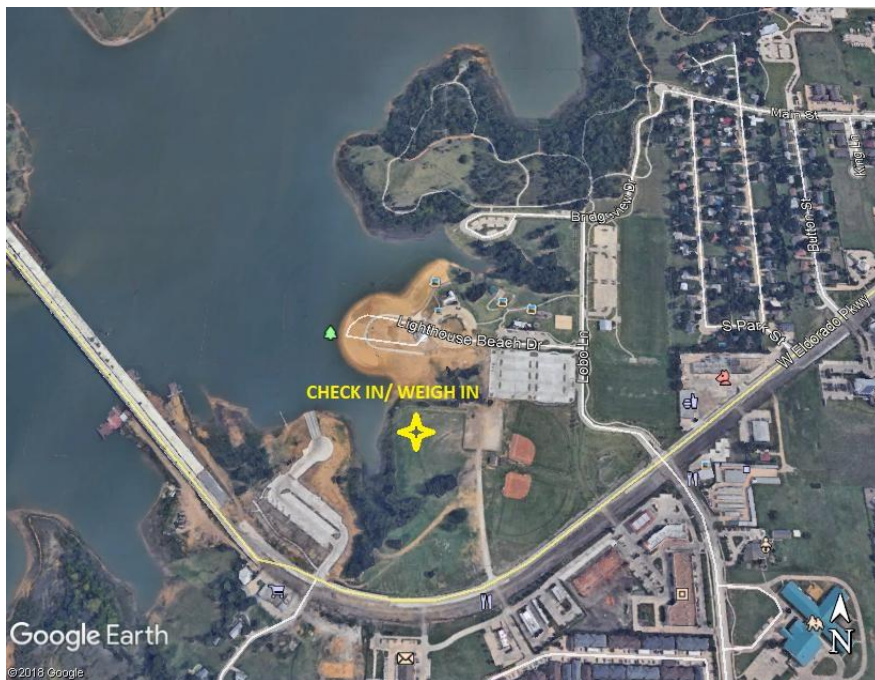
**Check-in:** All teams must turn in their wristband and/or be in line with your catch and wristband or in line waiting for a sponsor provided weigh in bag by 4:30 pm. Any team not in line with their catch and/or waiting for a sponsor provided weigh in bag and/or turning in their wristbands by 4:30 pm will not be allowed to weigh their catch and will receive zero (0) points for this event.

**Weigh-in:** There will only be 25 mesh bags at the weigh-in tanks and 25 weigh-in bags available. Students **MUST USE** our weigh-in bags to move fish from the boat to the holding tanks. We will not accept any other bags to be used except for the 25-sponsor provided weigh-in bags. There will be a courtesy board available for the students and boat captains to check their fish length before handing over the fish to the bump man. All anglers **MUST** have their fish checked by the bump board man prior to the fish being put into the mesh weigh-in bags. Students will not be allowed to come to the tanks and wait with their fish until a weigh bag becomes available. It is advised that once you have checked in, one angler wait with their fish in the boat and one wait at the tanks until there is a weigh bag available. If there are teams in line waiting for a sponsor provided weigh-in bag in at 4:30 pm, only those teams will still be allowed to weigh in after 4:30 pm.

**WRISTBANDS MUST BE WORN AND IN THE POSSESSION OF EACH TEAM DURING THE DURATION OF THE TOURNAMENT AND WHILE TRAILERING, PER TP & W REGULATIONS. WRISTBANDS MUST BE TURNED INTO THE TOURNAMENT OFFICIALS BY 4:30 PM, REGARDLESS IF YOU DO NOT HAVE ANY FISH TO WEIGH. WE MUST KNOW THAT EACH TEAM IS OFF OF THE WATER AND SAFE. EVEN IF YOU CHECK IN, YOU MUST STILL RETURN YOUR WRISTBAND TO THE TOURNAMENT OFFICIAL BY THE “WEIGH-IN / CHECK-IN” BANNER. ABSOLUTELY NO EXCEPTIONS TO THIS RULE!**

**Polygraph:** A polygraph will be given to the boat captain of the winning team. Along with a randomly drawn team. Then any team that may have a protest filed against them.

**Post Tournament Boat Inspection:** The Top 5 placing teams will undergo a **MANDATORY** boat safety check. Those teams leaving early or refusing to partake in the **MANDATORY** boat safety inspection, or those that fail the inspection, will be disqualified from the tournament. **The items that will be checked are: working fire extinguisher, throw cushion, liability insurance reflecting \$300,000 coverage, current fishing license for any student 17 years or older, current boat registration, working navigation lights, working kill switch, proper life vests for all occupants.**







## the lakefront LITTLE ELM

### Lakefront District Features

- 1 Los Jalapeños
- 2 Lakefront Trail
- 3 Beard Park
- 4 Towers Tap House
- 5 Hydrous Wake Park
- 6 Hula Hut
- 7 Kabuki Hibachi
- 8 Little Elm Library
- 9 Tennis Courts
- 10 Cottonwood Trail
- 11 Cottonwood Creek Marina
- 12 Nautical Boat Club
- 13 Cottonwood Ball Fields
- 14 Cottonwood Park
- 15 Waters Edge Cafe
- 16 Bruno's Italian Restaurant
- 17 Ruchulu Kitchen
- 18 Gas Station
- 19 Sophia's Tex Mex
- 20 Little Elm Crafthouse
- 21 Margarita Hut
- 22 Gas Station
- 23 Fishing License/Bait Shop
- 24 Ice
- 25 Boat Ramp
- 26 Softball Fields
- 27 eFrog Station
- 28 Little Elm Beach
- 29 Fire Pits
- 30 Lakefront Grill
- 31 Amphitheatre
- 32 DFW Surf
- 33 Johnny Broyles Nature Trail
- 34 Little Elm Park
- 35 Camping Area
- 36 Senior Center
- 37 Recreation Center
- 38 Soccer Fields
- 39 Fuzzy's Taco Shop
- Public Restrooms

MAP COURTESY OF THE CITY OF LITTLE ELM

